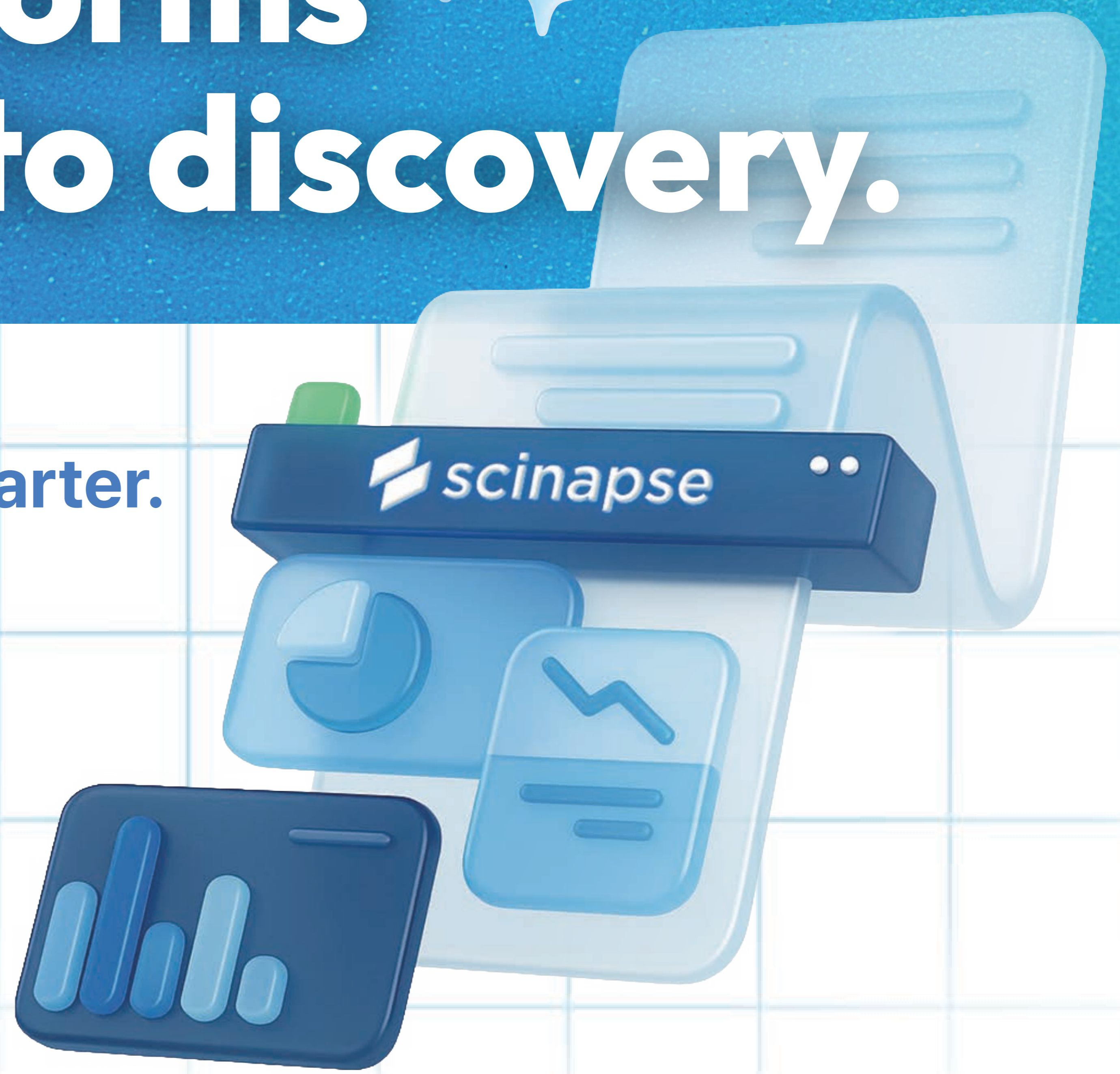


AI that transforms knowledge into discovery.

Scinapse is a next-generation research discovery tool, but smarter.

It pulls citation networks and trend data from millions of papers to surface the **top authors, key works, and emerging directions in your field.**

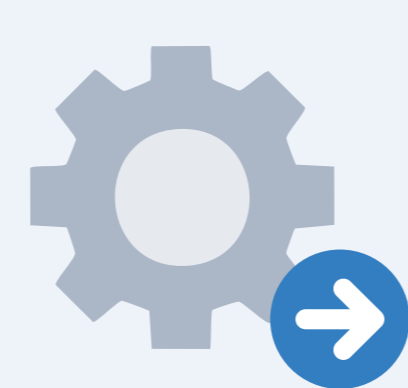
It navigates millions of papers, uncover influential insights, and accelerate breakthroughs.



250M+

Number of Papers

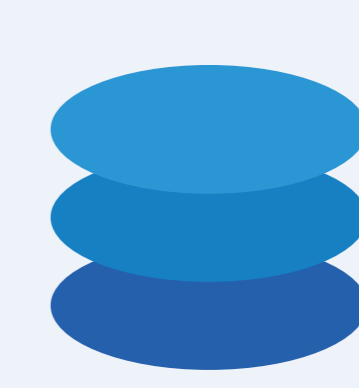
Scinapse contains over 250million papers



8.4M+

Processes Analysis Data Monthly

Processes over 8.4 million data points monthly



37M+

Generated Analysis Data Monthly

Generates over 37 million analysis data entries each month.



99%

SCIE Journals Coverage

Scinapse's research data covers nearly all SCIE journals



290,600+

Influential Scientific Experts

Over 290,600 influential scientific experts



38,800+

Trending Research Fields

More than 38,800 trending research fields.

Scinapse at a Glance

Main Page

The main page features a navigation menu on the left with options like Home, Research Intelligence, Expert Finder, and Paper Search. The main content area includes a search bar, a 'Scinapse Functions' section with 'Research Intelligence', 'Expert Finder', and 'Scinapse Trends' cards, and an 'About our data' section highlighting '99%+ SCIE Journal Coverage', '37M+ Analysis Data Generated Monthly', and 'Analysis of Relationships and Similarities'. Annotations 1-3 point to the search bar, the function cards, and the data statistics respectively.

Article View

The article view page for 'Quantum entanglement' shows author information (H-index, Journal & Impact Factor), citation counts (7,981 Citations), and various action buttons (Sources, PDF, Cite). Annotations 1-4 highlight the authors list, the journal name and impact factor, the citation count, and the action buttons. The 'Basic Info' section includes an abstract, paper fields (tags like Quantum teleportation, Physics, Quantum discord), and figures/tables.

Article View (cont.)

This section shows three tabs from the article view:

- Analytics:** Displays 'Citation trends' and 'Citation Analysis' charts.
- References:** Lists papers cited by the current article, such as 'Clinical features of patients infected with 2019 novel coronavirus in Wuhan, China'.
- Citations:** Lists papers that cite the current article, such as 'Characteristics of SARS-CoV-2 and COVID-19'.

 Summary boxes at the bottom state: 'Analytics provides Trends, Citation Analysis of the paper', 'References show the works that the paper itself has cited.', and 'Citations show the cases where other papers have cited this paper.'